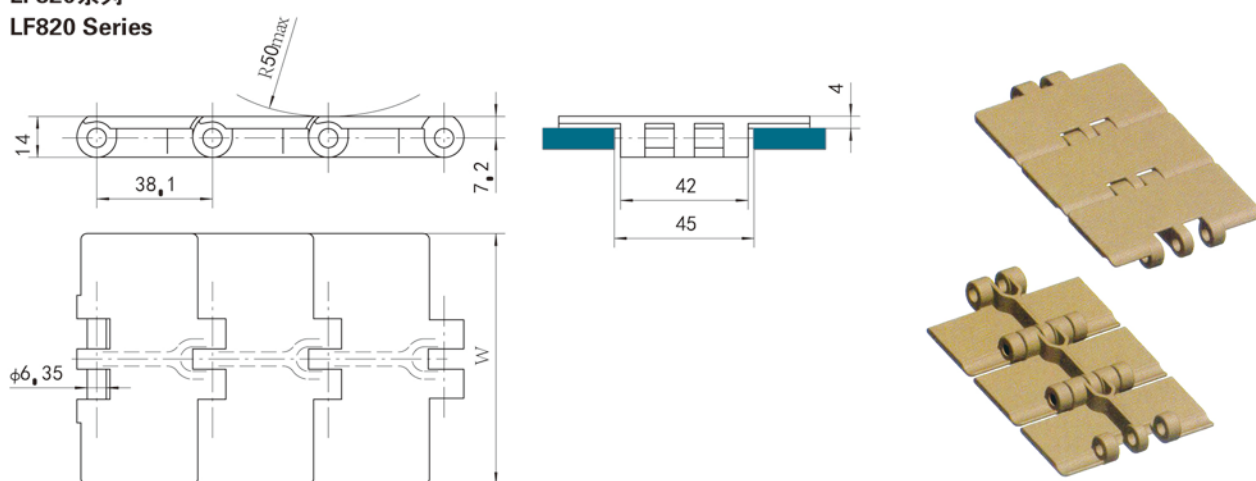


工程塑料直输平顶链 Engineering Plastic Straight Running Flat Top Chains

LF820系列 LF820 Series



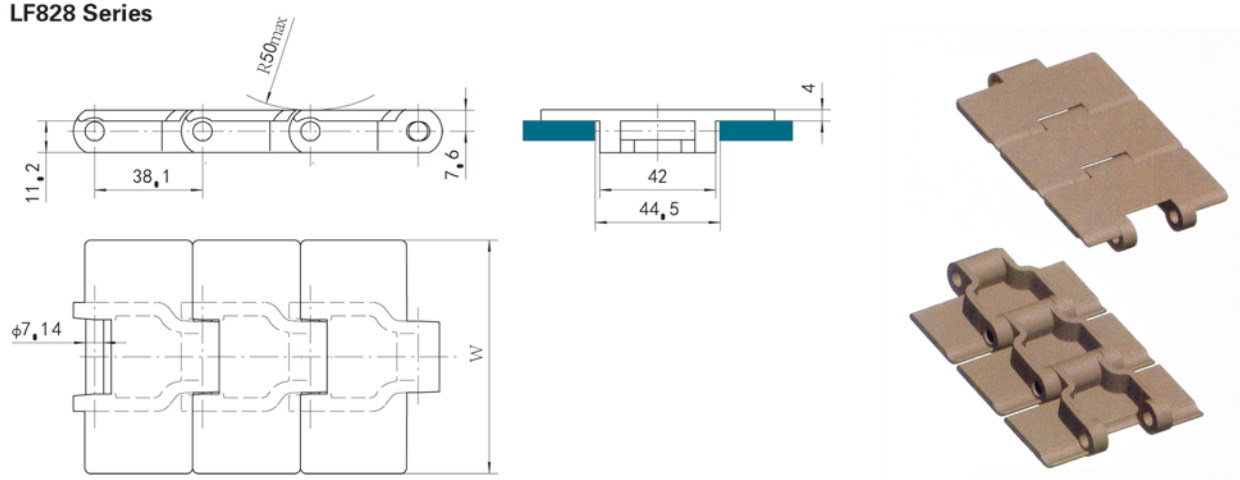
链号 Chain No.	链板 Plate		屈服强度 Yield Strength $\sigma_{0.2}$		重量 weight		
	材料 material	宽度 (Width)W		kN	lbf	kg/m	lb/ft
		mm	inch				
LF 820-K325	聚甲醛 Delrin	82.5	3 1/4	5	1,125	0.83	0.56
LF 820-K350		88.9	3 1/2			0.87	0.58
LF 820-K400		101.6	4			0.95	0.64
LF 820-K450		114.3	4 1/2			1.03	0.69
LF 820-K600		152.4	6			1.25	0.84
LF 820-K750		190.5	7 1/2			1.47	0.99

- 说明: 1. 链条主要尺寸参数等同于812/815不锈钢直输平顶链, 但链轮不能互换采用, 这是由于链板的反面有加强筋, 因此链轮的中间必须开槽, 以便有足够的空间容纳加强筋;
2. 链条相邻链板的交接处上下相互重叠, 这种结构不易藏纳脏物并方便清洁;
3. 销轴材料为奥氏体型铬镍不锈钢;
4. 供货时, 每条链条的标准长度为3.048m (10ft), 计80节。

- Note: 1. The main dimensional parameters of the chains are the same as those of 812/815 stainless steel straight running flat top chains, but their sprockets can not be interchanged for using, as there is a reinforcing bar on the back of plate, the middle of sprockets must be grooved to allow for this.
2. The chains have an overlapping at the juncture of adjacent plates, the design of which is difficult to let dirty substance enter and easy to clean.
3. The material of pin is Austenitic Chromium-Nickel Stainless Steel.
4. When supplied, the standard length of each chain is 3.048m (10ft), totaling 80 links.

工程塑料直输平顶链 Engineering Plastic Straight Running Flat Top Chains

LF828系列 LF828 Series



链号 Chain No.	链板 Plate		屈服强度 Yield Strength $\sigma_{0.2}$		重量 weight		
	材料 material	宽度 (Width)W		kN	lbf	kg/m	lb/ft
		mm	inch				
LF 828-K325	聚甲醛	82.5	3 1/4	6	1,350	1.10	0.74
LF 828-K350	Delrin	83.8	3 19/64			1.15	0.77

- 说明: 1. 链条最高承载能力高于标准820系列工程塑料直输平顶链20%,
2. 与880M系列完全一样的链轮和销轴;
3. 链条相邻链板的交接处上下相互重叠, 这种结构不易藏纳脏物并方便清洁;
4. 销轴材料为奥氏体型铬镍不锈钢;
5. 供货时, 每条链条的标准长度为3.048m (10ft), 计80节。

- Note: 1. The highest load capacity of the chains is 20% higher than that of Standard 820 series engineering plastic straight running flat top chains.
2. Identical sprocket and pin as 880M series.
3. The chains have an overlapping at the juncture of adjacent plates, the design of which is difficult to let dirty substance enter and easy to clean.
4. The material of pin is Austenitic Chromium-Nickel Stainless Steel.
5. When supplied, the standard length of each chain is 3.048m (10ft), totaling 80 links.