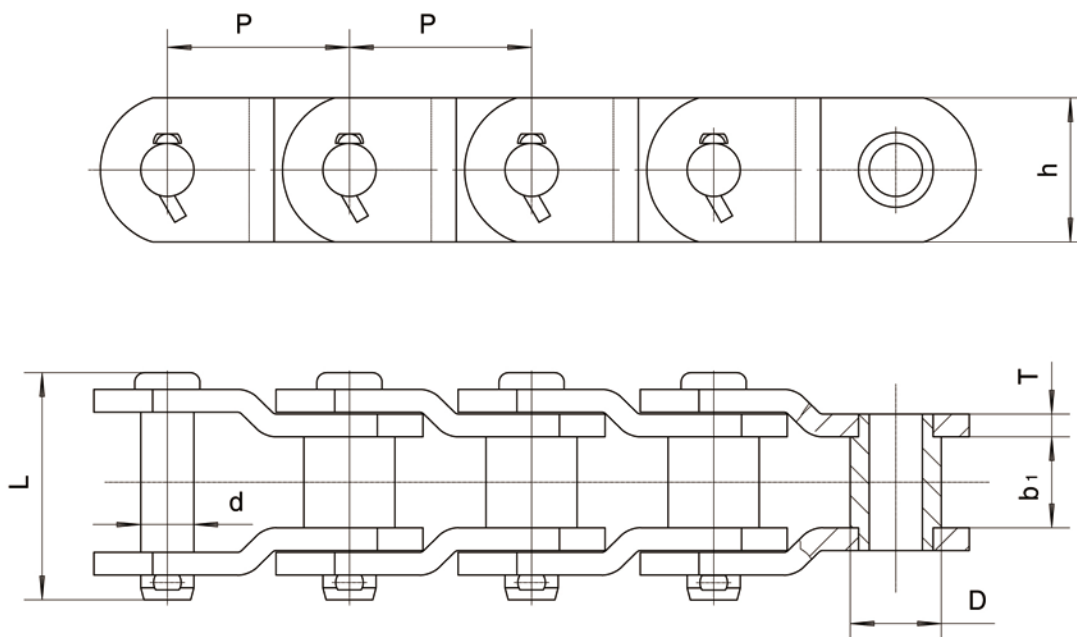


重载弯板套筒链 Heavy-Duty Cranked-Sidebar bush Chains



链号	节距	窄端内宽	滚子或套筒外径	链板		销轴			最小抗拉强度	每米净重
Chain No.	Pitch	Inside width at narrow end	Roller or bush	Sidebars		Pin			Ultimate tensile strength	Weight Per meter
	P	b1(min)	D(max)	h	T	d	L1	L2	Q(min)	q
	mm	mm	mm	mm	mm	mm	mm	mm	kN	kg/m
ZY6065	152.4	75.8	76.2	120.7	19.05	44.45	88.1	96.1	1970	81.25
※ZY6060	152.4	101	88.9	114.3	22	47.63	108.65	120.65	1700	102
ZY850	152.4	57.15	50.8	82.6	16	33.27	157	634.7	45.3	36.6
ZY6066	152.4	75.8	76.2	120.7	19.05	44.45	184	1778	124.5	81.3
ZY886	177.8	68.33	66.68	101.6	19.05	41.07	172.2	1300	84.5	60.2

※ 链条为滚子弯板链，其余为套筒弯板链。

※ The chain is roller cranked-link chain, the others are bush cranked-link chains.